

A Journal of the Gesellschaft Deutscher Chemiker

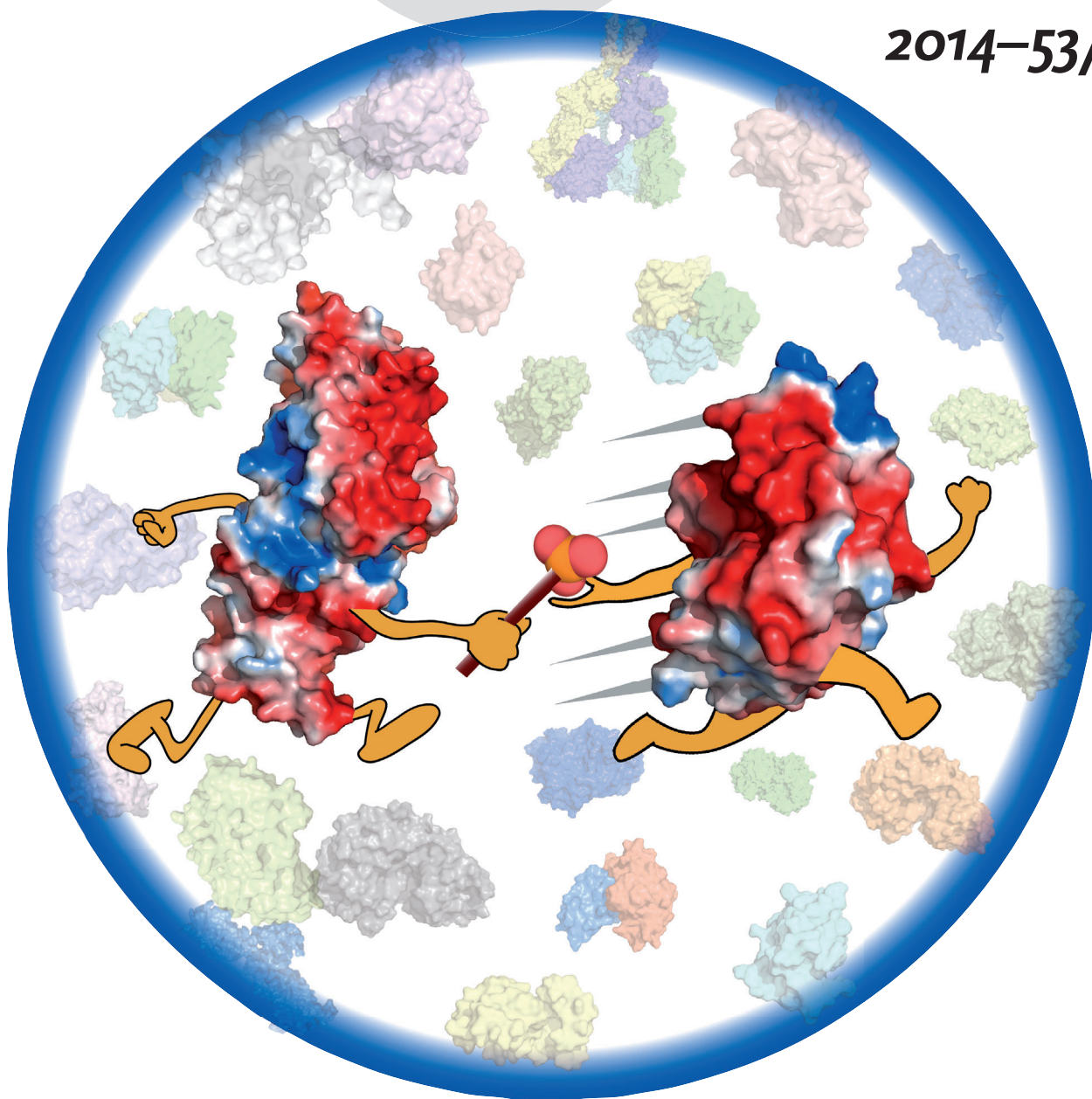
# Angewandte Chemie

GDCh

International Edition

[www.angewandte.org](http://www.angewandte.org)

2014–53/43



## Proteins interact ...

... in a transient yet specific manner to relay signals within the crowded cellular environment. In their Communication on page 11501 ff., C. Tang, W.-P. Zhang, and co-workers show that phosphorylation signaling can take place between two proteins with a binding affinity of only 25 nM and a complex lifetime in the  $\mu$ s–ms range, which is an order of magnitude weaker than all known protein–protein interactions. Such ultra-weak and fleeting interactions could be prevalent among signaling proteins.

WILEY-VCH